

## Rangliste K1 Turnerinnen

Rang	Name	Jg.	Verein	SP	RE	BO	Total	
<b>1</b>	<b>Berther Selina</b>	<b>2002</b>	<b>Getu Malans</b>	<b>9.50</b>	<b>9.40</b>	<b>9.60</b>	<b>28.50</b>	*
<b>2</b>	<b>Hauser Ricarda</b>	<b>2002</b>	<b>Gimmattas Sent/Scuol</b>	<b>9.10</b>	<b>9.20</b>	<b>9.30</b>	<b>27.60</b>	*
<b>3</b>	<b>Martiné Chiara</b>	<b>2003</b>	<b>Getu Malans</b>	<b>9.05</b>	<b>9.25</b>	<b>9.15</b>	<b>27.45</b>	*
4	Liesch Bigna	2003	Getu Malans	8.70	9.55	9.15	27.40	*
5	Albertin Sina	2000	Gimmattas Sent/Scuol	8.85	9.10	9.30	27.25	*
	Bischoff Natalia	2002	Gimmattas Sent/Scuol	8.85	9.20	9.20	27.25	*
7	Holzknacht Caroline	2001	Gimmattas Sent/Scuol	8.75	9.00	9.45	27.20	*
8	Von Vogelsang Emma	2003	TV Eschen/Mauren	8.90	9.20	9.05	27.15	*
9	Bisig Rea	2004	Getu FTV Davos	8.80	9.35	8.85	27.00	*
	Flütsch Nina	2003	Getu Flims	8.40	9.25	9.35	27.00	*
11	Egli Yanira	2003	Getu FTV Davos	9.10	9.00	8.70	26.80	
12	Zimmermann Milena	2003	Getu Malans	9.00	9.05	8.70	26.75	
	Mathis Livia	2004	Getu Malans	9.00	9.05	8.70	26.75	
	Weder Gemma-Lynn	2004	Getu FTV Davos	8.75	9.20	8.80	26.75	
15	Pargätzi Lilly	2002	TV Tamins	8.70	9.00	9.00	26.70	
16	Winkler Kim Nina	2005	Getu FTV Davos	8.70	8.95	8.90	26.55	
17	Albertin Mali	2003	Gimmattas Sent/Scuol	8.65	8.65	8.80	26.10	
18	Burri Gina	2004	Getu FTV Davos	8.40	8.90	8.75	26.05	
	Baitella Sara	2002	TV Glarus a.S.	8.90	8.50	8.65	26.05	
20	Lüscher Larissa	2004	TV Glarus a.S.	8.25	8.70	8.95	25.90	
21	Dicht Sonali	2004	Getu FTV Davos	8.30	8.85	8.65	25.80	
22	Poo Selina	2004	Gimmattas Sent/Scuol	8.40	8.35	8.65	25.40	
23	Koch Annina	2004	Getu FTV Davos	8.40	8.40	8.55	25.35	
24	Tietz Sonja	2003	TV Glarus a.S.	8.50	8.65	7.95	25.10	
25	Wehrli Alessia	2003	Getu Flims	8.30	9.00	7.50	24.80	
	Cantieni Lea	2004	Gimmattas Sent/Scuol	8.05	8.35	8.40	24.80	
27	Spadin Jannie	2002	Getu Flims	8.00	9.00	7.25	24.25	
28	Schmidt Sandra	2004	Gimmattas Sent/Scuol	7.95	8.30	7.95	24.20	

## Rangliste K1 Turner

Rang	Name	Jg.	Verein	SP	RE	BO	BA	Total	
<b>1</b>	<b>Kühnis Tim</b>	<b>2003</b>	<b>Getu FTV Davos</b>	<b>9.50</b>	<b>9.50</b>	<b>9.30</b>	<b>9.35</b>	<b>37.65</b>	*
<b>2</b>	<b>Lingenhag Sarino</b>	<b>2002</b>	<b>Gimmats Sent/Scuol</b>	<b>9.20</b>	<b>9.05</b>	<b>9.25</b>	<b>9.05</b>	<b>36.55</b>	*
<b>3</b>	<b>Meier Lukas</b>	<b>2003</b>	<b>TV Trimmis</b>	<b>9.05</b>	<b>9.20</b>	<b>8.65</b>	<b>9.25</b>	<b>36.15</b>	*
4	Lanfranchi Valerio	2004	TV Trimmis	9.25	8.70	8.95	9.05	35.95	*
	Hügli Jan	2002	Getu FTV Davos	9.10	8.95	8.80	9.10	35.95	*
6	Persenico Naoki	2004	TV Trimmis	9.30	8.70	8.80	9.05	35.85	*
7	De Sousa Mauro	2002	TV Trimmis	8.75	8.85	8.65	9.25	35.50	
8	Flütsch Laurin	2004	TV Trimmis	9.00	8.75	8.65	8.60	35.00	
9	Renz Janis	2004	BTV Schiers	8.80	8.30	8.75	8.60	34.45	
	Cerra Stefano	2004	TV Trimmis	8.45	9.00	8.60	8.40	34.45	
11	Noggler Men	2004	Gimmats Sent/Scuol	8.20	8.60	8.35	9.25	34.40	
12	Klaas Mael	2005	Getu Malans	8.40	8.90	8.75	8.00	34.05	
13	Guler Severin	2004	Gimmats Sent/Scuol	8.15	8.30	8.55	8.65	33.65	
14	Hersche Janis	2004	TV Trimmis	8.60	8.45	8.35	8.05	33.45	
15	Pfleger Dominik	2004	TV Trimmis	8.65	8.20	7.85	8.35	33.05	
16	Lutz Yanik	2003	Getu Sargans	7.65	8.45	8.20	8.15	32.45	

## Rangliste K2 Turnerinnen

Rang	Name	Jg.	Verein	SP	RE	BO	Total	
<b>1</b>	<b>Rietberger Nina</b>	<b>2003</b>	<b>Getu Malans</b>	<b>9.35</b>	<b>9.55</b>	<b>9.10</b>	<b>28.00</b>	*
<b>2</b>	<b>Stieger Nava</b>	<b>2002</b>	<b>Getu Malans</b>	<b>9.25</b>	<b>9.20</b>	<b>9.45</b>	<b>27.90</b>	*
<b>3</b>	<b>Prater Leonie</b>	<b>2004</b>	<b>TV Eschen/Mauren</b>	<b>9.15</b>	<b>9.30</b>	<b>9.05</b>	<b>27.50</b>	*
	<b>Frey Melina</b>	<b>2002</b>	<b>Getu Malans</b>	<b>9.20</b>	<b>9.05</b>	<b>9.25</b>	<b>27.50</b>	*
5	Klaas Leanne	2003	Getu Malans	9.10	9.50	8.75	27.35	*
6	Blöchlinger Mirjam	2003	Getu Malans	8.85	9.15	8.95	26.95	*
7	Jäger Svenja	2002	Getu Malans	8.90	9.15	8.85	26.90	*
8	Beer Lea	2001	TV Tamins	8.80	8.85	9.00	26.65	*
9	Hartmann Nina	2002	Getu Malans	9.00	8.90	8.60	26.50	*
10	Koch Seraina	2002	Getu FTV Davos	8.70	9.05	8.70	26.45	*
	Beck Teresa	2004	TV Eschen/Mauren	8.70	8.95	8.80	26.45	*
12	Veraguth Seraina	2002	Getu Flims	8.70	8.45	9.25	26.40	
	Hunger Nina	2003	Getu Malans	8.80	8.70	8.90	26.40	
	Bifulco Lorena	2001	TV Glarus a.S.	8.50	8.75	9.15	26.40	
	Bernhard Julia	2000	Getu Flims	8.30	8.95	9.15	26.40	
16	Geronimi Lorena	2003	Getu FTV Davos	8.65	8.75	8.90	26.30	
17	Bergamin Muriel	2002	Getu FTV Davos	8.30	8.80	9.15	26.25	
18	Hauser Alina	2004	Gimmattas Sent/Scuol	8.75	8.35	9.00	26.10	
19	Nef Michelle	2002	Gimmattas Sent/Scuol	8.55	8.55	8.80	25.90	
20	Koch Madlaina	2001	Getu FTV Davos	8.25	8.95	8.65	25.85	
21	Tresch Flavia	2002	Getu FTV Davos	8.45	8.95	8.05	25.45	
22	Eicher Ilana	2003	Getu FTV Davos	8.20	9.15	8.05	25.40	
23	Pattocchio Alessia	2001	TV Eschen/Mauren	8.55	8.55	8.25	25.35	
24	Rauso Mia	2001	TV Tamins	8.30	8.45	8.55	25.30	
25	Leoni Laura	2002	TV Glarus a.S.	8.10	8.30	8.85	25.25	
26	Bernhard Ravinia	2002	Getu FTV Davos	7.95	8.15	8.95	25.05	
27	Meisser Sarah	2003	Getu FTV Davos	7.75	8.60	8.60	24.95	
28	Winkler Lisa	2003	Getu FTV Davos	7.35	8.75	8.55	24.65	
	Gadmer Noemi	2003	Getu FTV Davos	7.55	8.30	8.80	24.65	
30	Merz Jenny	2002	Gimmattas Sent/Scuol	8.10	8.35	8.00	24.45	

## Rangliste K2 Turner

Rang	Name	Jg.	Verein	SP	RE	BO	BA	Total	
<b>1</b>	<b>Hagmann Gian Marco</b>	<b>2003</b>	<b>Getu Malans</b>	<b>9.35</b>	<b>9.45</b>	<b>8.90</b>	<b>9.20</b>	<b>36.90</b>	*
<b>2</b>	<b>Gubser Matthias</b>	<b>2001</b>	<b>Getu Sargans</b>	<b>9.00</b>	<b>8.65</b>	<b>8.75</b>	<b>9.15</b>	<b>35.55</b>	*
<b>3</b>	<b>Clijzen Till</b>	<b>2003</b>	<b>Getu Malans</b>	<b>8.80</b>	<b>8.60</b>	<b>8.80</b>	<b>8.85</b>	<b>35.05</b>	*
4	Wasescha Nicola	2000	TV Trimmis	8.50	9.00	8.60	8.45	34.55	
5	Kohler Jan	2001	Getu Sargans	8.75	8.00	8.70	8.85	34.30	
6	Grünenfelder Jan	2003	Getu Sargans	8.45	8.55	7.70	8.75	33.45	
7	Suter Philippe	2001	TV Tamins	7.80	7.85	7.75	8.40	31.80	
8	Elmer Franco	2003	TV Glarus a.S.	8.10	8.15	6.80	8.50	31.55	

## Rangliste K3 Turnerinnen

Rang	Name	Jg.	Verein	SP	RE	BO	SR	Total	
<b>1</b>	<b>Keller Norina</b>	<b>2000</b>	<b>Getu Malans</b>	<b>9.50</b>	<b>9.65</b>	<b>9.55</b>	<b>9.35</b>	<b>38.05</b>	*
<b>2</b>	<b>Bernhard Melissa</b>	<b>2002</b>	<b>Getu Malans</b>	<b>9.40</b>	<b>9.70</b>	<b>9.50</b>	<b>9.40</b>	<b>38.00</b>	*
<b>3</b>	<b>Mutzner Tiffany</b>	<b>2002</b>	<b>Getu Malans</b>	<b>9.45</b>	<b>9.10</b>	<b>9.70</b>	<b>9.25</b>	<b>37.50</b>	*
4	Clijssen Elina	2000	Getu Malans	9.05	9.40	9.35	9.25	37.05	*
5	Ackermann Fiona	2002	Getu Malans	9.30	9.35	9.35	8.85	36.85	*
6	Dürmüller Hanna	2000	Getu Malans	9.35	9.00	9.30	8.90	36.55	*
7	Hagmann Martina	2001	Getu Malans	9.60	8.65	9.15	8.80	36.20	*
8	Disch Celine	2001	Getu Malans	8.70	9.30	9.05	8.95	36.00	*
9	Taverna Martina	2001	TZ Engiadina	9.00	8.70	8.70	9.20	35.60	*
10	Stricker Selina	1999	Gimmattas Sent/Scuol	8.95	9.10	8.85	8.30	35.20	*
11	Meisser Céline	2001	Getu FTV Davos	9.10	8.15	9.15	8.75	35.15	*
12	Lingenhag Lajana	2003	Gimmattas Sent/Scuol	8.50	9.05	8.70	8.85	35.10	
13	Brunner Carmen	2001	Getu Malans	8.05	8.75	9.25	8.70	34.75	
14	Biäsch Robyn	2002	Getu FTV Davos	8.90	8.10	8.70	9.00	34.70	
15	Noggler Mazzina	2002	Gimmattas Sent/Scuol	8.35	8.90	9.10	8.20	34.55	
16	Rupf Silvana	2000	Getu Malans	7.65	8.80	9.35	8.70	34.50	
17	Mayolani Tina Maria	2001	Gimmattas Sent/Scuol	8.05	8.80	8.90	8.35	34.10	
18	Zanetti Seraina	2000	Gimmattas Sent/Scuol	8.55	8.40	8.40	8.65	34.00	
	Bassin Milena	2001	TZ Engiadina	7.65	8.65	8.65	9.05	34.00	
20	Stricker Corsina	2000	Gimmattas Sent/Scuol	8.30	8.85	8.50	8.30	33.95	
21	Sutter Michela	2001	TZ Engiadina	8.60	8.10	8.60	8.40	33.70	
22	Pleisch Noemi	2001	Getu FTV Davos	8.60	8.45	8.15	8.35	33.55	
23	Meier Fabienne	2002	TV Eschen/Mauren	8.25	8.90	7.90	8.45	33.50	
24	Flütsch Bianca	2001	Getu Flims	7.80	8.80	8.25	8.60	33.45	
25	Gauch Lara	2000	Getu Flims	8.30	8.40	7.95	8.55	33.20	
26	Pleisch Fabienne	2002	Getu FTV Davos	8.10	8.40	8.05	8.15	32.70	
27	Minestrini Cristina	2000	Gimmattas Sent/Scuol	7.80	8.25	8.35	8.15	32.55	
28	Bearth Yara	2001	TV Tamins	8.60	8.15	7.15	8.35	32.25	
29	Blöchlinger Mara	2001	Getu Malans	8.15	7.50	8.00	8.40	32.05	
30	Küng Annina	2001	TV Glarus a.S.	8.00	7.55	7.65	8.25	31.45	
31	Felix Urezza	1999	Gimmattas Sent/Scuol	7.55	7.75	7.55	8.55	31.40	
32	Burri Chiara	2001	Getu FTV Davos	6.40	8.30	8.10	8.25	31.05	

## Rangliste K3 Turner

Rang	Name	Jg.	Verein	SP	RE	BO	SR	BA	Total	
<b>1</b>	<b>von Salis Rubén</b>	<b>1999</b>	<b>Getu Malans</b>	<b>8.90</b>	<b>8.95</b>	<b>8.95</b>	<b>8.50</b>	<b>7.70</b>	<b>43.00</b>	*
<b>2</b>	<b>Angel Sean</b>	<b>2000</b>	<b>TV Glarus a.S.</b>	<b>8.75</b>	<b>8.20</b>	<b>8.20</b>	<b>9.00</b>	<b>8.35</b>	<b>42.50</b>	*
<b>3</b>	<b>Gruber Christian</b>	<b>2001</b>	<b>Getu Flims</b>	<b>9.05</b>	<b>8.90</b>	<b>8.55</b>	<b>7.85</b>	<b>7.95</b>	<b>42.30</b>	*
4	Hinnen Mischa	2001	BTV Schiers	7.30	8.20	8.00	7.10	7.40	38.00	

## Rangliste K4 Turnerinnen

Rang	Name	Jg.	Verein	SP	RE	BO	SR	Total	
<b>1</b>	<b>Pahl Nele</b>	<b>2001</b>	<b>Getu Malans</b>	<b>9.40</b>	<b>8.85</b>	<b>9.15</b>	<b>9.30</b>	<b>36.70</b>	*
<b>2</b>	<b>Hobi Enja</b>	<b>2000</b>	<b>Getu FTV Davos</b>	<b>9.05</b>	<b>8.75</b>	<b>9.00</b>	<b>9.15</b>	<b>35.95</b>	*
<b>3</b>	<b>Bodenwinkler Sina</b>	<b>2000</b>	<b>Getu FTV Davos</b>	<b>8.60</b>	<b>8.70</b>	<b>9.00</b>	<b>9.05</b>	<b>35.35</b>	*
4	Hosang Sandra	1997	Getu Malans	8.10	8.85	8.50	8.95	34.40	*
5	Kühnis Laura	2000	Getu FTV Davos	8.50	8.50	8.50	8.55	34.05	*
	Koller Stefanie	1995	TZ Engiadina	9.35	7.45	8.70	8.55	34.05	*
7	Hügli Anja	1999	Getu FTV Davos	8.15	8.45	8.80	8.35	33.75	
8	Ruffner Anita	1999	TZ Engiadina	8.20	8.15	8.45	8.85	33.65	
9	Bieler Mara	2000	Getu Bonaduz	8.10	7.90	8.75	8.65	33.40	
10	Nüssler Nicole	1998	Getu Bonaduz	8.25	8.40	8.60	7.10	32.35	
11	Hager Alisha	1999	Getu FTV Davos	7.45	7.70	8.45	8.25	31.85	
12	Oertli Nina	1998	TV Glarus a.S.	7.35	7.50	8.20	8.50	31.55	
13	Schenk Joy	1998	Getu FTV Davos	6.70	7.35	8.30	7.65	30.00	

## Rangliste K4 Turner

Rang	Name	Jg.	Verein	SP	RE	BO	SR	BA	Total	
<b>1</b>	<b>Caviezel Fabio</b>	<b>2001</b>	<b>Getu Bonaduz</b>	<b>9.10</b>	<b>8.75</b>	<b>9.00</b>	<b>8.60</b>	<b>8.35</b>	<b>43.80</b>	*
<b>2</b>	<b>Tarnutzer Luzi</b>	<b>2000</b>	<b>BTV Schiers</b>	<b>8.80</b>	<b>8.65</b>	<b>8.80</b>	<b>8.70</b>	<b>8.75</b>	<b>43.70</b>	*
<b>3</b>	<b>Schrofer Franco</b>	<b>1998</b>	<b>TV Trimmis</b>	<b>8.85</b>	<b>8.70</b>	<b>8.35</b>	<b>8.80</b>	<b>8.85</b>	<b>43.55</b>	*
4	Schaniel Gian Marco	1999	Getu Malans	8.85	8.60	8.70	8.60	8.65	43.40	
5	Meier Johannes	1998	TV Trimmis	7.65	8.35	8.20	8.90	8.55	41.65	
6	Giger Daniel	1997	Getu Flims	8.10	8.00	7.45	8.30	7.70	39.55	
7	Sutter Adrian	1999	BTV Schiers	8.30	7.35	7.75	8.60	4.80	36.80	

## Rangliste Qualifikation Superfinal Turnerinnen

Rang	K	Name	Jg.	Verein	SR	RE	SP	BO	Total	*
1	K6	Wenk Sarina	1996	Winterthur	9.50	9.15	9.50	9.55	37.70	*
2	KD	Hartmann Claudia	1988	Geräteriege BTV Schiers	9.35	9.30	9.40	9.50	37.55	*
3	K7	De Schoenmacker Iara	1995	Winterthur	9.10	9.15	9.60	9.70	37.55	*
4	K6	von Ziegler Florence	1994	Hombrechtikon	9.55	8.90	9.40	9.60	37.45	*
5	K6	Hobi Sidonia	1997	Getu Malans	9.35	9.35	9.40	9.30	37.40	*
6	K6	Siegrist Mia	1996	Geräteriege BTV Schiers	9.45	9.10	9.35	9.35	37.25	*
7	KD	Mattli Nicole	1986	TV Grüningen	9.15	9.25	9.15	9.70	37.25	*
8	KD	Ruhstaller Andrea	1985	TV Bülach	9.40	8.95	9.40	9.45	37.20	*
9	K5	Gantenbein Ladina	1998	Geräteriege BTV Schiers	9.40	9.00	9.45	9.30	37.15	*
10	K6	Marino Luana	1996	Geräteriege BTV Schiers	9.25	9.10	9.45	9.35	37.15	*
11	K5	Werro Ladina	1999	Getu Malans	9.15	9.20	9.35	9.45	37.15	*
12	KD	Hug-Berglas Corine	1980	TV Bülach	9.10	9.15	9.20	9.70	37.15	*
13	K7	Spescha Corina	1991	Geräteriege BTV Schiers	9.45	8.70	9.65	9.30	37.10	*
14	K7	Schneider Nathalie	1991	Urdorf	9.20	9.15	9.30	9.45	37.10	*
15	K5	Kessler Cilia	2000	Geräteriege BTV Schiers	9.10	9.35	9.40	9.25	37.10	*
16	K7	Zwicky Lisa	1995	Winterthur	8.80	9.35	9.45	9.50	37.10	*
17	K7	Suter Franziska	1987	Hombrechtikon	9.25	9.10	9.65	9.05	37.05	
18	K5	Steinmann Nina	1999	Winterthur	9.00	9.15	9.40	9.45	37.00	
19	K6	Goodall Marie	1996	Urdorf	9.10	9.10	9.30	9.45	36.95	
20	K5	Egli Ninja	1999	Geräteriege BTV Schiers	9.00	9.50	9.25	9.20	36.95	
21	K5	Romanelli Alessia	1997	Weiningen	9.00	9.00	9.50	9.35	36.85	
22	K5	Wenk Kaja	1998	Winterthur	8.95	9.25	9.35	9.30	36.85	
23	K7	Adank Michaela	1985	Geräteriege BTV Schiers	9.15	9.25	9.10	9.30	36.80	
24	KD	Gysel Sonja	1984	Rafz	9.10	8.80	9.40	9.50	36.80	
25	K5	Jäggli Lena	1998	Geräteriege BTV Schiers	8.90	9.50	9.10	9.30	36.80	
26	K5	Orsi Elena	1999	Urdorf	8.90	9.40	9.40	9.10	36.80	
27	K5	Dürmüller Rebecca	1998	Getu Malans	9.10	9.15	9.45	9.05	36.75	
28	K6	Kunz Yvonne	1995	Hombrechtikon	9.00	9.45	8.95	9.30	36.70	
29	K5	Frey Marina	1997	Geräteriege BTV Schiers	9.00	9.20	9.35	9.15	36.70	
30	K5	Muharemi Aida	1998	Egg	8.65	9.25	9.45	9.35	36.70	
31	K6	Widmer Livia	1997	Wildberg	9.35	8.90	9.45	8.95	36.65	
32	KD	Kaufmann Sandra	1986	Urdorf	9.00	8.95	9.25	9.45	36.65	
33	K6	Mohler Silja	1997	Weiningen	9.30	8.60	9.30	9.40	36.60	
34	K5	Mazzocco Laura	2000	Winterthur	8.80	9.55	9.00	9.20	36.55	
35	K7	Schär Amanda	1994	TZ Engiadina	9.10	9.35	8.80	9.25	36.50	
36	KD	Hanselmann Andrea	1982	Geräteriege BTV Schiers	9.20	8.90	9.15	9.20	36.45	
37	K6	Grossenbacher Timea	1994	Urdorf	9.00	9.35	8.65	9.40	36.40	
38	K5	Flütsch Lucienne	1998	Geräteriege BTV Schiers	8.75	9.50	8.80	9.35	36.40	
39	K6	Frey Katja	1996	Obfelden	8.95	8.75	9.30	9.35	36.35	
40	K5	Burri Melanie	1999	Winterthur	8.65	8.95	9.30	9.30	36.20	
41	K6	Flütsch Vanessa	1996	Geräteriege BTV Schiers	9.20	8.40	9.30	9.25	36.15	

42	KD	Bärtsch-Adank Regina	1986	Geräteriege BTV Schiers	9.20	8.70	9.00	9.05	35.95
43	KD	Fahrni Gaby	1976	Winterthur	8.85	9.00	8.90	9.20	35.95
44	K7	Orlando Naemi	1994	TV Altstetten ZH	8.75	9.35	8.75	9.10	35.95
45	K7	Bargetzi Sarah	1992	Geräteriege BTV Schiers	9.00	8.60	9.20	9.10	35.90
46	KD	Schneebeli Martina	1987	TV Dietlikon	8.80	9.10	8.55	9.35	35.80
47	K7	Foffa Selina	1992	Geräteriege BTV Schiers	8.50	8.55	9.35	9.30	35.70
48	K6	Kobler Alessia	1995	Urdorf	8.70	8.60	8.85	9.50	35.65
49	KD	Kadi Noella	1990	TV Altstetten ZH	8.40	8.70	9.40	9.15	35.65
50	K7	Schär Sina	1992	TZ Engiadina	8.85	8.55	9.05	8.95	35.40
51	K5	Schaniel Rebekka	1997	Getu Malans	8.85	8.60	8.60	9.20	35.25
52	K7	Baumberger Regina	1991	TV Altstetten ZH	8.60	8.70	8.75	9.20	35.25
53	K5	Bataillard Nora	1997	Weiningen	8.40	8.95	8.75	9.15	35.25
54	K5	Meisser Chiara	1996	Getu Malans	8.50	8.95	8.45	9.25	35.15
55	K7	Blum Ramona	1988	TV Altstetten ZH	8.55	8.65	8.80	9.10	35.10
56	K5	Gassmann Sibylle	1999	TV Altstetten ZH	8.50	8.90	8.65	9.05	35.10
57	K7	Keller Maya	1993	TV Wiedikon	8.55	8.60	8.85	9.05	35.05
58	K5	Wüest Michelle	1996	Getu Malans	8.80	8.35	8.90	8.95	35.00
59	K5	Copes Veronica	1998	TZ Engiadina	8.85	8.35	8.50	9.05	34.75
60	K5	Herren Mara	1997	Egg	7.95	8.95	8.85	9.00	34.75
61	K5	Tscharner Marina	1996	Getu Malans	8.60	9.00	8.70	8.35	34.65
62	K5	Kessler Ursina	1996	Getu Malans	8.65	8.50	8.85	8.60	34.60
63	K5	Rüegg Sonja	1999	Getu Malans	8.00	7.95	8.95	9.10	34.00
64	K5	Knörr Larissa	2000	TZ Engiadina	8.35	7.40	8.50	9.15	33.40
65	K6	Davatz Fränzi	1995	Getu Malans	8.40	7.90	8.00	8.60	32.90
66	K5	Thomann Rebekka	1997	Getu FTV Davos	7.70	8.70	7.65	8.85	32.90
67	K6	Rupf Kerstin	1996	Getu Malans	7.80	7.40	8.65	8.80	32.65

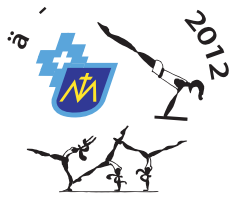
\* qualifiziert

## Rangliste Qualifikation Superfinal Turner

Rang	K	Name	Jg.	Verein	SR	RE	SP	BO	BA	Total	*
1	K7	Meier Stefan	1993	Obfelden	9.30	9.35	9.80	9.40	9.75	47.60	*
2	K6	Niederhäuser Roman	1995	Obfelden	9.40	9.30	9.70	9.35	9.15	46.90	*
3	K7	Häberling Martin	1989	Obfelden	9.30	9.15	9.50	9.55	9.35	46.85	*
4	K H	Dobmann Dominik	1975	TV Grüningen	9.40	9.25	9.45	9.15	9.55	46.80	*
5	K6	Groll Peter	1991	TV Trimmis	9.40	9.05	9.30	9.30	9.35	46.40	*
6	K7	Guntli Daniel	1990	TV Trimmis	8.90	9.40	9.40	9.40	9.20	46.30	*
7	K5	Nock Florian	1996	Bauma	9.35	8.90	9.20	9.25	9.40	46.10	*
8	K5	Hofstetter Michael	1996	Obfelden	9.05	9.05	9.75	9.30	8.90	46.05	*
9	K6	Wüst Philipp	1995	Bauma	9.40	8.95	8.95	9.20	9.25	45.75	*
10	K5	Schnyder Christian	1995	TV Glarus a.S.	9.40	8.90	9.50	9.00	8.90	45.70	*
11	K5	Nussbaumer Mauro	1998	Obfelden	9.15	8.65	9.40	9.15	9.35	45.70	*
12	K5	Nussbaumer Nico	1996	Obfelden	9.30	9.10	8.85	8.90	9.20	45.35	*
13	K5	Foffa Franco	1997	Geräteriege Bonaduz	9.00	8.70	9.50	8.90	9.15	45.25	*
14	K5	Tsanas Aris	1998	TV Trimmis	9.15	9.05	9.00	9.20	8.80	45.20	*
15	K6	Furrer Severin	1993	TV Dägerlen	9.15	8.75	9.50	9.20	8.60	45.20	*
16	K5	Foffa Flavio	1995	Geräteriege Bonaduz	9.05	8.65	9.50	9.15	8.85	45.20	*
17	K6	Keller Adrian	1994	Kloten	8.60	8.90	9.15	9.50	8.85	45.00	
18	K5	Seeberger Fabrizio	1995	Bauma	8.55	9.10	8.85	9.20	9.30	45.00	
19	K5	Niederer Marco	1995	TV Trimmis	9.05	8.85	9.05	9.20	8.75	44.90	
20	K5	Rhyner Siro	1996	TV Glarus a.S.	9.45	8.50	9.10	8.80	9.00	44.85	
21	K H	Beilstein Marcel	1976	Fehraltorf	9.25	9.00	9.10	9.35	8.10	44.80	
22	K5	Anneler Sandro	1998	Obfelden	8.70	8.95	9.10	8.75	9.10	44.60	
23	K5	Rüegg Fabian	1997	TV Trimmis	8.85	8.65	9.45	8.80	8.50	44.25	
24	K5	Stüssi Noah	1998	TV Glarus a.S.	9.00	8.85	9.40	8.65	8.25	44.15	
25	K H	Stüssi Daniel	1965	TV Glarus a.S.	9.15	8.55	9.05	8.50	8.70	43.95	
26	K5	Müller Remo	1998	Weiningen	8.10	8.70	8.85	9.25	9.00	43.90	
27	K5	Obrist Marco	1995	Getu FTV Davos	9.30	8.25	9.20	8.75	8.25	43.75	
28	K5	Guntli Benjamin	1995	TV Trimmis	9.10	8.40	8.80	9.10	8.30	43.70	
29	K5	Stüssi Fadri	1998	TV Glarus a.S.	9.10	8.30	9.15	8.40	8.30	43.25	
30	K5	von Arx Dominic	1995	Getu FTV Davos	9.20	7.45	9.10	9.10	8.35	43.20	
31	K5	Marugg Nando	1998	Getu Malans	8.75	8.40	9.30	8.10	8.50	43.05	
32	K6	Weber Orlando	1992	TV Trimmis	7.95	8.80	8.75	8.45	8.95	42.90	
33	K5	Caviezel Giuliano	1998	Geräteriege Bonaduz	8.25	8.45	8.60	8.85	8.65	42.80	
34	K5	Putzi Christian	1999	BTV Schiers	8.55	8.10	9.00	8.85	7.90	42.40	

\* qualifiziert

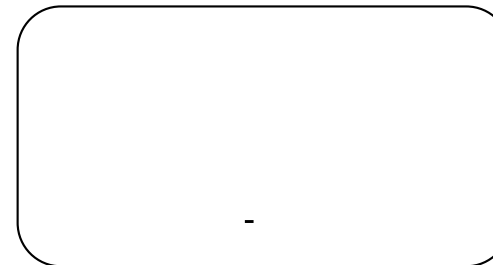




ä -

2012

Malans, 20. Oktober 2012



4	Corine Hug-Berglas	BO#####					
14	Ladina Werro	BO	Corine Hug-Berglas	BA####			
7	Luana Marino	SR#####	Luana Marino	RE #			
11	Sidonia Hobi	RE			Corine Hug-Berglas	RE #	
1	Nicole Mattli	RE####			Nicole Mattli	SR####	<b>1./2.</b>
15	Corina Spescha	SP #	Nicole Mattli	BO#####			
6	Mia Siegrist	BO#####	Mia Siegrist	SP			Nicole Mattli SP ###
10	Claudia Hartmann	SR					Iara De Schoenmacker SR ##
8	Cilia Kessler	SP###					
16	Lisa Zwicky	SP##	Cilia Kessler	BO#			Corine Hug-Berglas SR ##
9	Sarina Wenk	SR	Nathalie Schneider	RE####			Nathalie Schneider SR ###
3	Nathalie Schneider	BO#####			Nathalie Schneider	SP ##	
					Iara De Schoenmacker	RE ###	<b>3./4.</b>
13	Ladina Gantenbein	SP					
2	Iara De Schoenmacker	BO#####	Iara De Schoenmacker	SP###			
12	Andrea Ruhstaller	SR	Florence von Ziegler	SP##			
5	Florence von Ziegler	BO#####					

